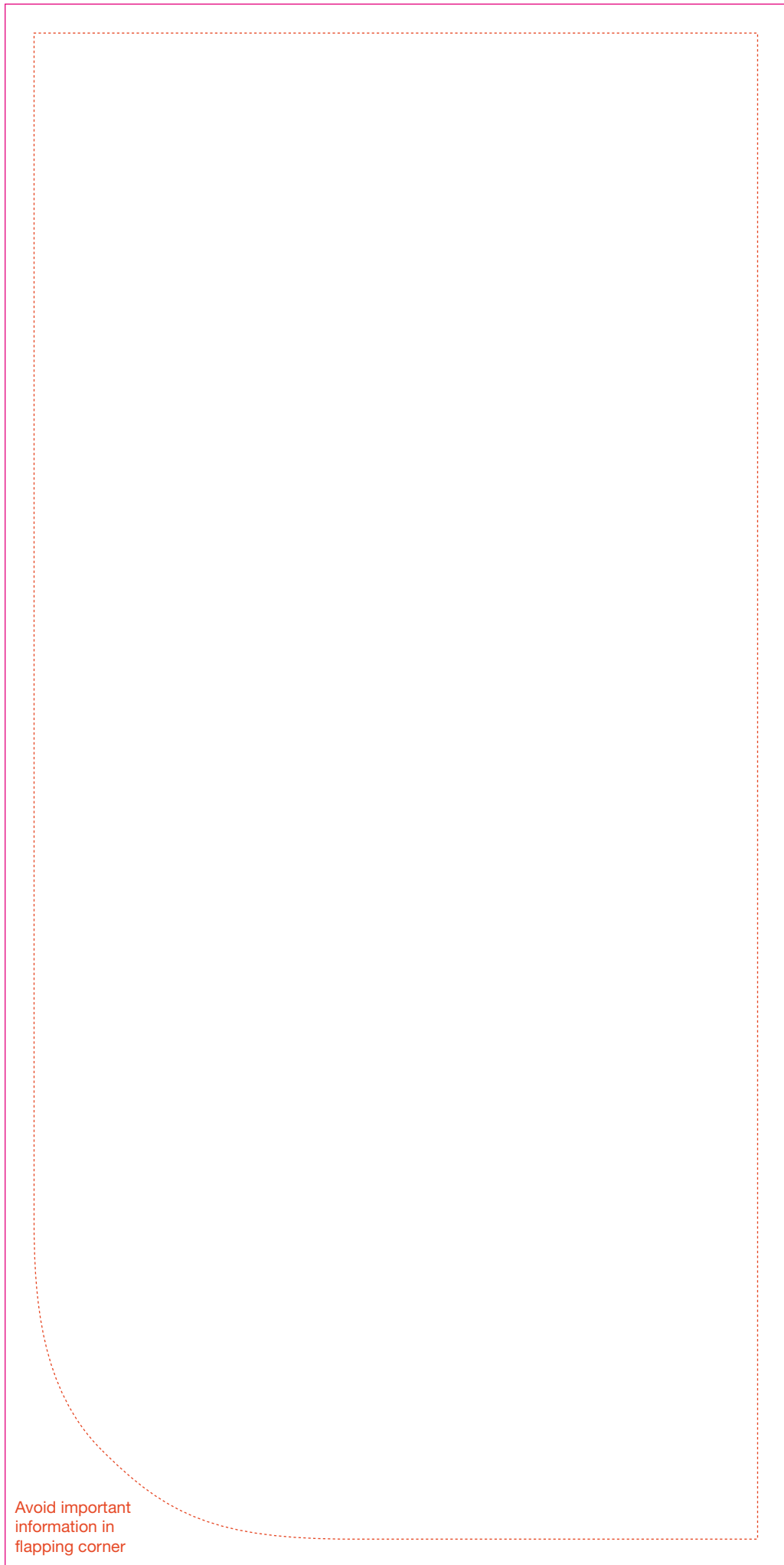
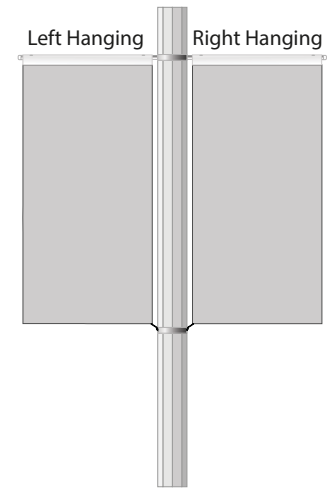
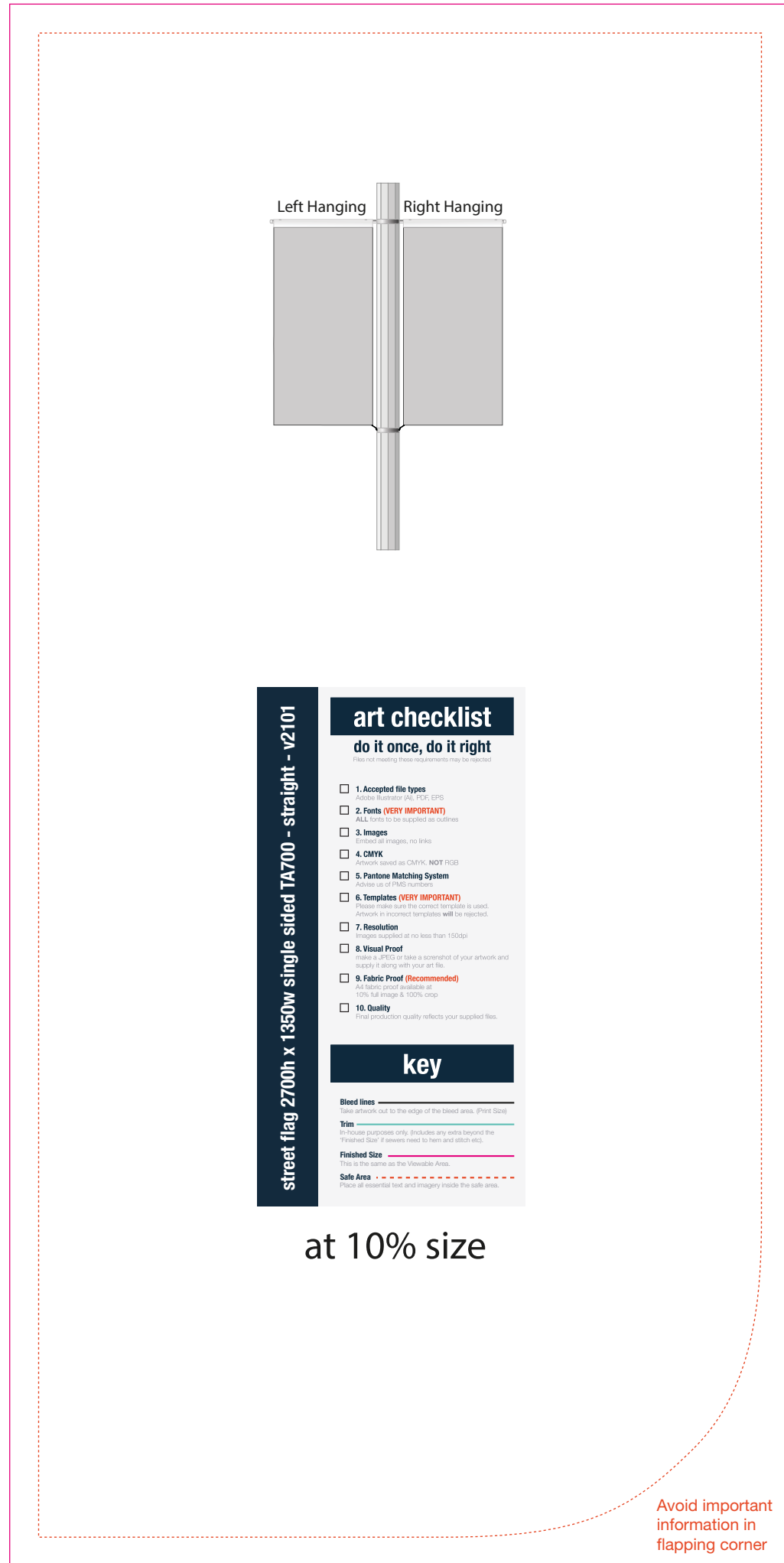


Left Hanging



Right Hanging



street flag 2700h x 1350w single sided TA700 - straight - v2101

art checklist

do it once, do it right
Files not meeting these requirements may be rejected

- 1. Accepted file types**
Adobe Illustrator (AI), PDF, EPS
- 2. Fonts (VERY IMPORTANT)**
ALL fonts to be supplied as outlines
- 3. Images**
Link all images, no links
- 4. CMYK**
Artwork saved as CMYK, NOT RGB
- 5. Pantone Matching System**
Advise us of PMS numbers
- 6. Templates (VERY IMPORTANT)**
Please make sure the correct template is used.
Artwork in incorrect templates will be rejected.
- 7. Resolution**
Images supplied at no less than 150dpi
- 8. Visual Proof**
make a JPEG or take a screenshot of your artwork and supply it along with your art file.
- 9. Fabric Proof (Recommended)**
Artwork print available at 10% full image & 100% crop
- 10. Quality**
Final production quality reflects your supplied files.

key

Bleed lines ————
Place artwork out to the edge of the bleed area. (Print Size)

Trim ————
In-house purposes only. Includes any extra beyond the 'Finished Size' if sewers need to hem and stitch etc.

Finished Size ————
This is the same as the Viewable Area.

Safe Area - - - - -
Place all essential text and imagery inside the safe area.

at 10% size